

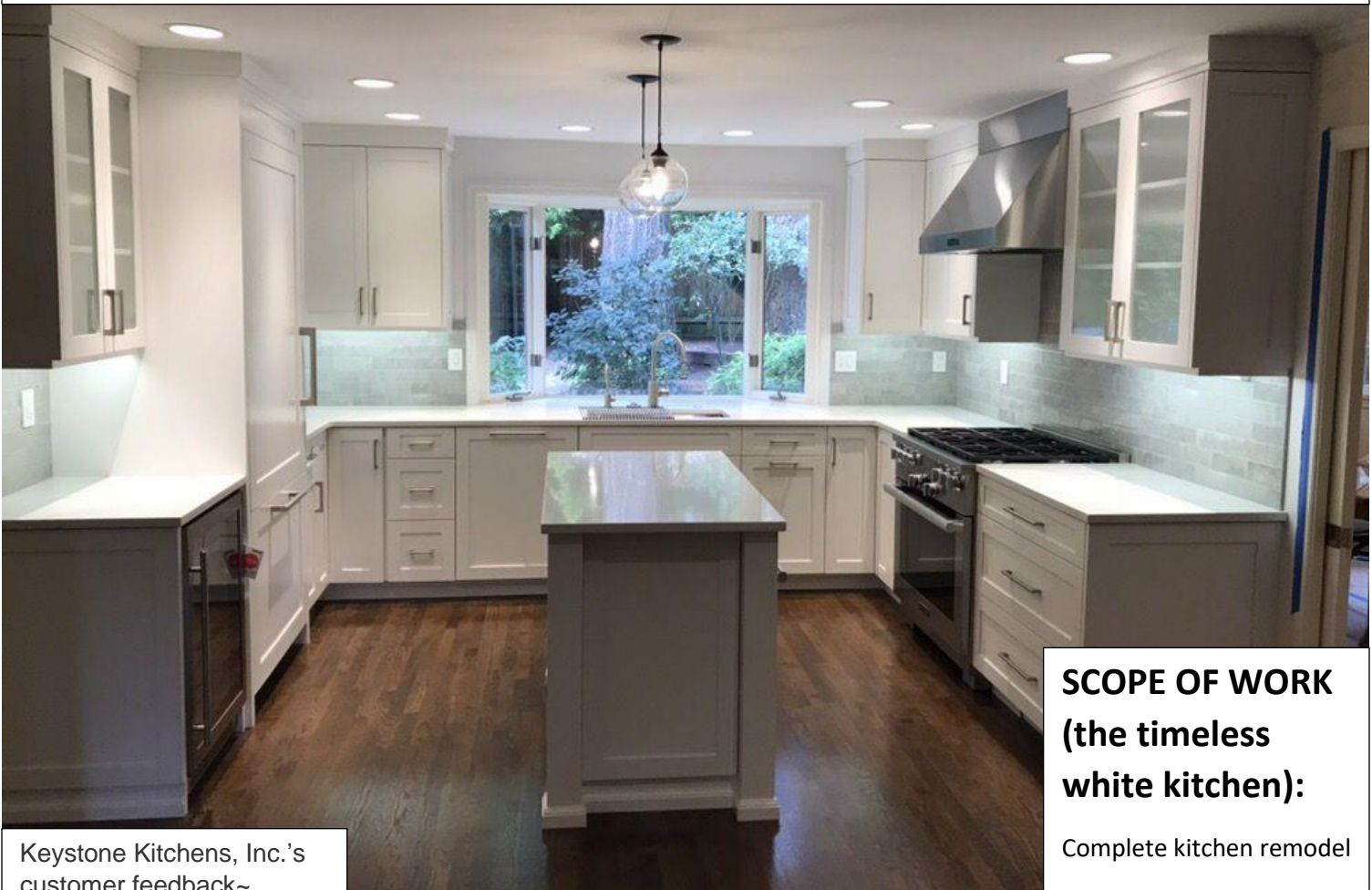
# Keystone Kitchens Inc.

FALL 2019 Newsletter

[www.keystonekitchens.com](http://www.keystonekitchens.com)

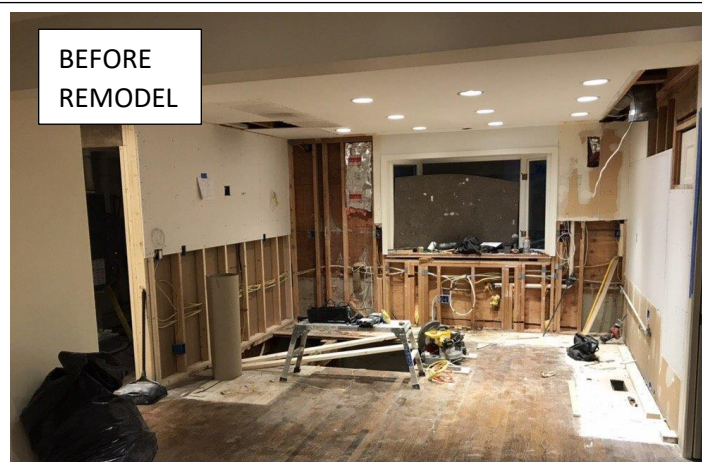
19510 144<sup>th</sup> Avenue NE, Suite A7, Woodinville, WA

Contractor License #KEYSTKI856CZ



Keystone Kitchens, Inc.'s customer feedback~

*... The craftsmanship of Keystone's cabinets is excellent. And we really appreciated the speed of the overall remodeling process without sacrificing quality. In six weeks, we went from having a giant hole in our floor from the demolition process to having an amazing kitchen...*

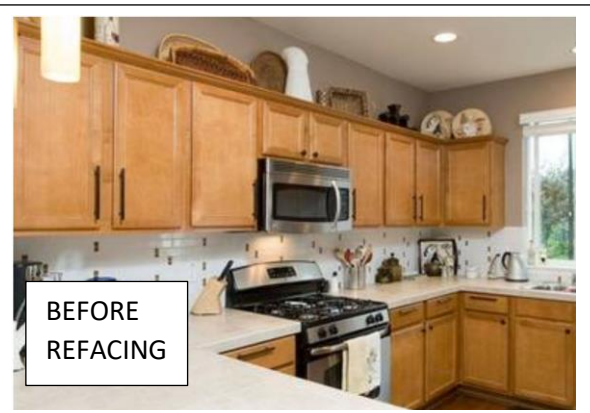
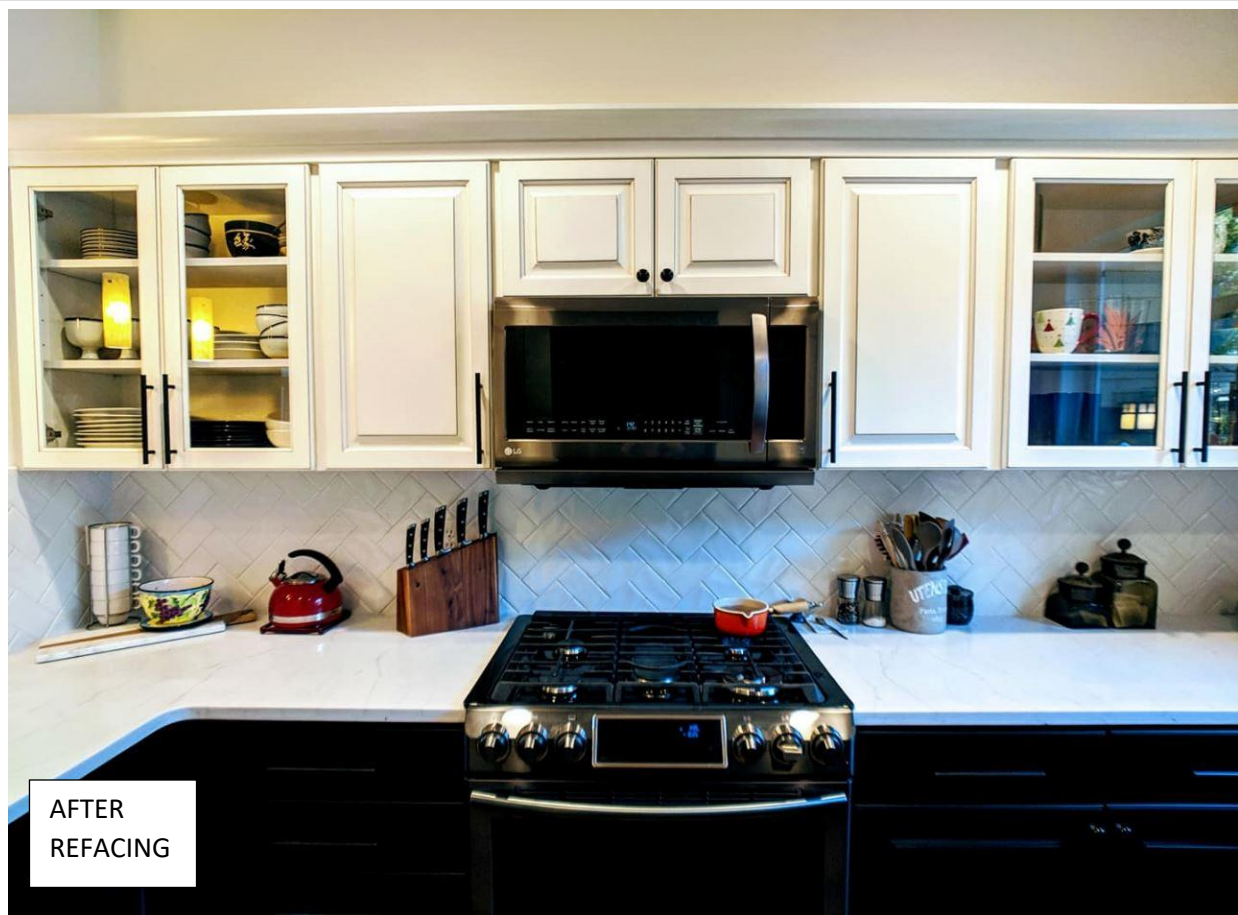


## SCOPE OF WORK (the timeless white kitchen):

- Complete kitchen remodel
- Keystone custom cabinets
- Multi-person floor plan
- Repair to damaged flooring
- Quartz countertops
- Layers of light (can/ceiling, undercabinet, pendant, natural)
- Finished details to carry

## SCOPE OF WORK (new tuxedo style kitchen):

Cabinet refacing: A simpler update keeping existing cabinets in place. Brand new doors, drawer fronts, hinges, countertops, sink, backsplash (herringbone pattern). New upper molding is taller (appropriate for the ceiling height). Glass cabinet doors break up the long run of cabinets and add an airy feeling to the space. Previous tile countertops are updated with solid surface quartz countertops.



The **BLIND CORNER CABINET** is a cabinet positioned at the corner between two base cabinets where part of one cabinet's contents is hidden by the other row of cabinets. It is blind because you cannot see what is inside the cabinet portion that is hidden and it can make that space fairly difficult to use. **ONE SOLUTION:** Blind Corner Optimizer

